

B+W Filter

The whole world of filters,
for digital and analog
photography.

Made in Germany



B+W Filters: High-tech Made in Germany	3
Mount Types	6
Protection Filters: Clear, UV	10
Polarizing Filters: Käsemann, Circular Polarizing Filters	14
Gray Filters	18
Close-Up Lenses: Close-Up and Macro Lenses	22
Effect Filters: Soft Focus Attachments, Graduated ND Filters, Redhancer	24
Special Filters: Infrared Filters, Blocking Filters, B+W Filters	28
Accessories	32

B+W Filter

The passion for optics,
with precision, quality
and longevity.

High tech made in Germany

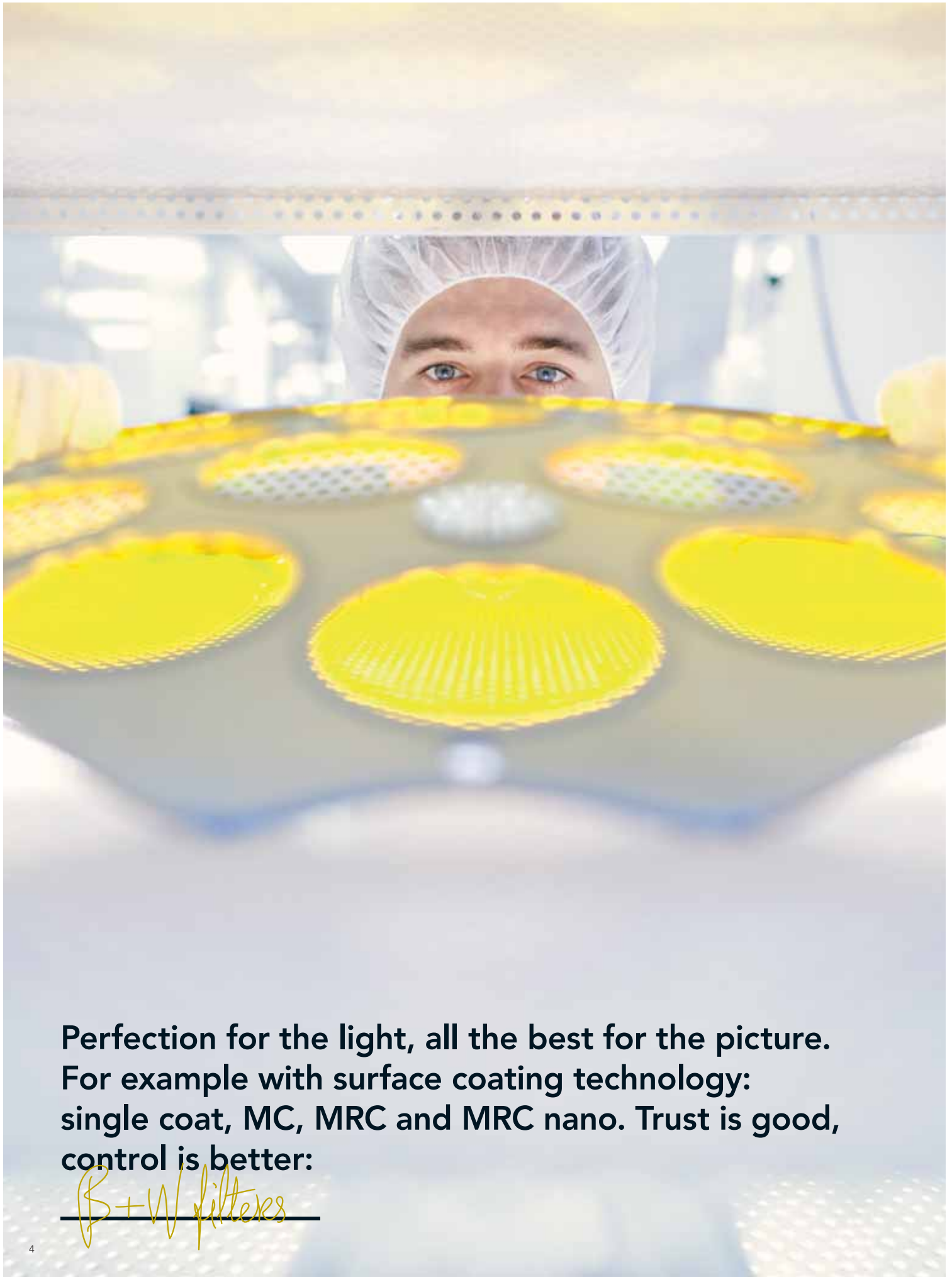
— since 1947 —

Innovation and experience

“Made in Germany”

B+W celebrated its 60th anniversary in 2007. Following the merger with Jos. Schneider Optische Werke GmbH in 1985, the company moved into its current premises in Bad Kreuznach. Under the umbrella of Schneider-Kreuznach a lively technology transfer developed. B+W has succeeded in establishing itself as one of the world's leading filter manufacturers. It has, for example, made decisive progress in surface coating. B+W is the first filter manufacturer in the world to offer MRC (Multi Resistant Coating). The world-famous Käsemann-type polarizing filter with its outstanding quality has been produced by B+W since 1989. Today, state-of-the-art production equipment, precise CNC machines and highly advanced reflection-reducing technology guarantee top quality which is amongst the very best to be found on the world market.

When it comes to technology products, a 60-year company history is corroboration of recognized top quality. Comprehensive know-how and state-of-the-art production technology have made a name for the proverbial B+W filter quality of Schneider-Kreuznach throughout the world. B+W filters also perform creative tasks in digital photography. Improving photographic results without touching the data record can only be done with first-class filters. The name B+W guarantees perfect image quality.



**Perfection for the light, all the best for the picture.
For example with surface coating technology:
single coat, MC, MRC and MRC nano. Trust is good,
control is better:**

B+W filters

B+W filters for better quality in digital photos

Particularly in digital photography, B+W filters are important tools for improving image quality. A B+W polarizing filter, for example, provides more saturated colors and higher color contrasts because the bluish-gray haze typical of sunny days is filtered before the image sensor generates the data record. If UV or IR radiation causes haze or blur a UV/IR blocking filter in front of the lens can ensure more brilliance and detail sharpness without the necessity for coarsening reshaping in the image program. Filters solve problems before they occur in the image sensor.

Image-processing programs, on the other hand, cannot conjure up information which is not contained in the data record. Many of the most commonly used color and contrast corrections work by removing image information (destructive image correction). Such, in some cases coarse repairs leave considerable gaps in the data record which are not yet recognizable on the PC monitor, but can become visible on the higher-resolution print.

Safety through high-tech production

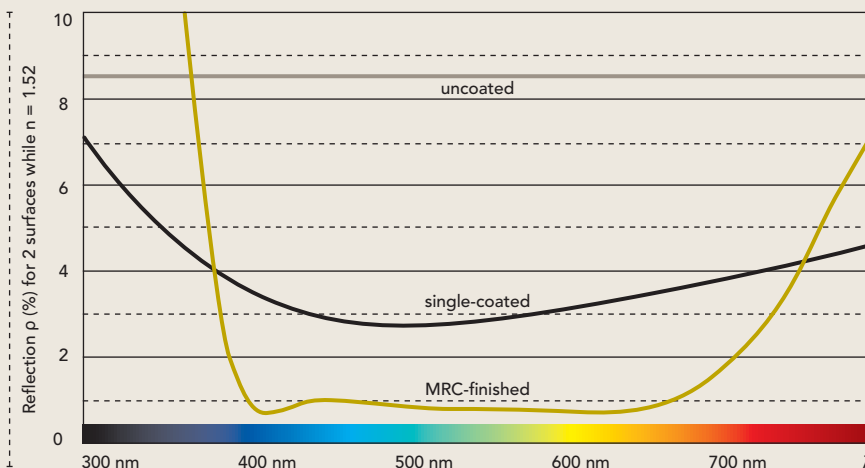
B+W is the first filter manufacturer in the world to offer MRC (Multi Resistant Coating). This multi-layer coating is vapor-deposited in highly advanced vacuum coating plants. It is extremely low-reflective and highly resistant to scratching. But above all its unique dirt and water-repellent surface makes cleaning the filters easier. In this way, filters can also perform a protective function for the front lens.

Top performance thanks to Multi Resistant Coating (MRC)

A key criterion for an outstanding filter is the coating. Quality begins in front of the lens, and that is, of course, where the filter is placed. A filter must not impair the performance of the optics. MRC (Multi Resistant Coating) have a multicoating layer on both sides (7 + 1 on each) which ensures maximum reflection reduction and thereby eliminates disruptive stray light. In this way, more brilliant colors and higher contrasts can be attained. Due to the low residual reflection (0.5%) MRC reliably prevents ghost or multiple images which can be caused by back reflection from the image sensor.

Furthermore, MRC protects the filter from scratching with increased layer hardness, thereby preserving the high optical quality. In addition, MRC is dirt and water repellent, which makes cleaning easier.

NEW: The MRC nano coating – all XS-Pro Digital filters have it. The outer layer of MRC nano has been strengthened in its effectiveness. The nanotechnology-based characteristic (lotus effect) produces a better beading effect in water. This makes cleaning the filter surface even simpler and faster.



B+W Filter – quality without rough edges for optical

perfection

Threaded filter mounts.

The quality of high-grade filters is determined by various criteria. Many photographers are aware that the plane parallelism and transmission properties of glass and the coating are key factors for image quality. What fewer of them know is that the filter mount must also meet high requirements as a link in the high-tech chain. The main purpose of the mount is to hold the fragile filter glass in place, firmly yet without play, for a long time. However, the glass must not be subjected to mechanical tension because even the tiniest deformations can result in visible unsharpness. Nevertheless, the filter must also be able to withstand a strong grip. And even after frequent use it must ensure easy and precise attachment and removal. A non-slip surface quality makes handling easier. The mount thickness should be kept to a minimum in order to prevent vignetting at short focal lengths.

B+W filter mounts meet these requirements to perfection. As a rule, they are made of brass on highly accurate CNC machines. The filter glass is kept in place securely but without tension by a threaded retaining ring that is manufactured with equal accuracy. Fine grooving (knurling) on the front makes attachment easier. Black (or silver) hard-chrome plating, clearly legible labeling (and usually matte black inside surface) ensure lastingly stable image quality and functionality.

To avoid vignetting in the image corners at extreme wide angles despite the slim design, B+W provides various mount types that cater for the different angles of view.

B+W quality: A brand that keeps its promise

Behind the globally recognized B+W filter quality is a continuous process of optimization and quality control which already begins with the raw glass blocks. For the production of the high-precision B+W filters Schott colored glass is used almost exclusively because Schott guarantees the very highest glass quality.

In Bad Kreuznach, computer-controlled grinding and polishing machines produce the highest filter quality from this raw material in an impressive range of designs and diameters. Special production processes remain the domain of the optimizing handcraft of experienced specialists. Strict quality checks in all key production steps ensure seamless production standards. B+W quality does not come about by coincidence, but is clearly defined: to manufacture exactly plane-parallel filter discs without arching or wedge errors (deviating thickness) which could lead to partial image blurring. The filter glass must be completely smooth, because roughness results in scattered light and an unwanted soft focus effect. B+W filter glass meets the highest requirements of camera and lens manufacturers and guarantees optimum imaging quality.

The continuous new development and further evolution of the B+W filter models and the final inspection of each individual filter mean that users can always achieve the best possible photographic results. It is therefore important to give the same consideration to quality when buying a filter as when selecting your lenses. 60 years of know-how guarantee top filter quality to meet global market standards.

Creative filter technology – the fascination of precise design

Close-up and macro lenses provide a simple way of exploring new motif worlds. With infrared filters you make the invisible visible and create artistic, fabulous images. For high color contrasts that still look authentic a polarizing filter is still the best option, despite the possibilities offered by photo-editing programs. Furthermore, polarizing filters can eliminate many reflections. The B+W Soft Pro filters produce a professional soft focus effect. And for action photography – whether it is sailing or mountain biking – B+W protection filters shield the front elements of expensive lenses from scratches and moisture. Experience the fascination of precise creativity with your digital camera thanks to high-quality B+W filters.

By the way: This brochure is only part of our overall program. You will find more filters and tips at:

www.schneiderkreuznach.com/fotofilter

Precision-engineered mounts

The stable brass mounts are made on high-precision CNC machines. Knurling on the front edge ensures non-slip handling when attaching and removing. Strict quality controls guarantee exact adherence to the target values.



Matte black surface to prevent reflections

Mount Types: *Premium* Line

Filter mounts – the mechanical specialists

The important role played by the filter mount and its mechanically complex task are often underestimated. Although mounts are supposed to fix the high-quality filter glass in position “for life”, they must not cause any sharpness-reducing tension in the glass. B+W manufactures various mount types, mainly out of stable brass, on CNC machines. The filter glass is screwed into a high-precision retaining ring, applying a pre-specified torque. Besides the excellent F-Pro standard mount which is suitable for telephoto lenses up to the most common wide-angle focal lengths, B+W offers the very flat XS-Pro mount for super-wide-angle lenses. This eliminates vignetting. For even more extreme focal lengths there is the Oversized mount on which the filter glass protrudes far beyond the thread of the retaining ring (more under “Filter mounts”). It is the high-grade mounts that finally make a B+W filter a true piece of high-tech that you can rely on for many years to come.

Premium Line

The increasingly short focal lengths of zoom lenses for digital system cameras increase their proneness to vignetting when attachments such as filters are used. For this reason, B+W has developed the new Premium Line series with an extremely narrow filter mount: XS-Pro Digital. It is ideal for demanding DSLR photography with short wide-angle zooms, beginning at 12 mm (APS format). Despite its small construction depth, this mount is fully equipped with a front thread for further accessories such as lens hoods or snap-in lens caps. This filter series is also made of brass and comes in matte black to prevent reflections.

Three filter types are available: 007 Clear MRC nano, UV 010 MRC nano and the XS-Pro Digital polarizing filter. The last is supplied exclusively as a Käsemann-type circular MRC nano polarizing filter.

The Premium Line XS-Pro Digital filters are available in Ø 49, 52, 55, 58, 60, 62, 67, 72, 77 and 82.



Thickness comparison:
left: standard mount F-Pro
right: XS-Pro Digital



B+W 007 Clear XS-Pro Digital

Mount Types: *Professional* Line



B+W Filter Mount F-Pro

The Standard Filter Mount F-Pro has high mechanical stability despite its shallow design. It can be used on most wide-angle lenses without the danger of vignetting. However, exact data regarding focal length and angle of view limitations are not possible because vignetting depends not only on the height of the filter mount and the angle of view, but also on the tube design of the front of the lens. As a guide, this filter mount can be used without vignetting on 35 mm camera lenses (approx. 63° diagonal angle of view). In addition, most wide-angle lenses with 28 mm (approx. 75° angle of view) and in many cases even with 24 mm (approx. 84° angle of view) can be combined with the F-Pro mount without the risk of vignetting. The same angles of view apply to lenses in digital cameras. Despite the thinner design, others filters, snap caps or lens hoods can be attached easily and safely to the front thread.

Another advantage of the new F-Pro filter mount: the filter glass is no longer held in place from the front, but from the back by the retaining ring. This prevents the retaining ring from being accidentally loosened during the removal of an additional filter or a lens hood that has been screwed in too tightly.

Available in Ø 24, 25.5, 27, 30.5, 35.5, 37, 39, 40.5, 43, 46, 48, 49, 52, 55, 58, 60, 62, 67, 72, 77, 82, 86, 95, 105, 112 and 122.



B+W Digital-Pro

Digital photography in particular benefits from quality filters. The Digital Pro filter mount is geared specially to the design and mount diameters of digital cameras and camcorders. The silver, hard chrome-plating on the outside follows the pale color trends of digital cameras and forms a harmonious unit with the lenses. In terms of its design, this high-quality mount is based on the F-Pro model. There are currently 13 mount sizes available between 30 and 62 mm.

B+W Digital-Pro mounts are available with the filter types 010, 010 MRC, 486, Käsemann-type circular MRC and C-Pol polarizing filters.

With Ø 30, 30.5, 35.5, 37, 39, 40.5, 43, 46, 49, 52, 55, 58 and 62.



B+W oversized wide-angle mount extra-wide

In the super-wide-angle range even narrow mounts such as the XS-Pro series cannot completely prevent vignetting. For such extreme special cases we have the B+W oversized filter mount extra-wide (EW). The mount has oversized dimensions. The mount and the filter glass protrude beyond the screw-in thread on the lens side. Even with ultra-short focal lengths with a narrow tube, this safety gap ensures that light incident at a highly oblique angle in the corners of the image is not impeded. This is necessary in particular for adjustable view and large-format cameras, as well as for special panorama cameras.

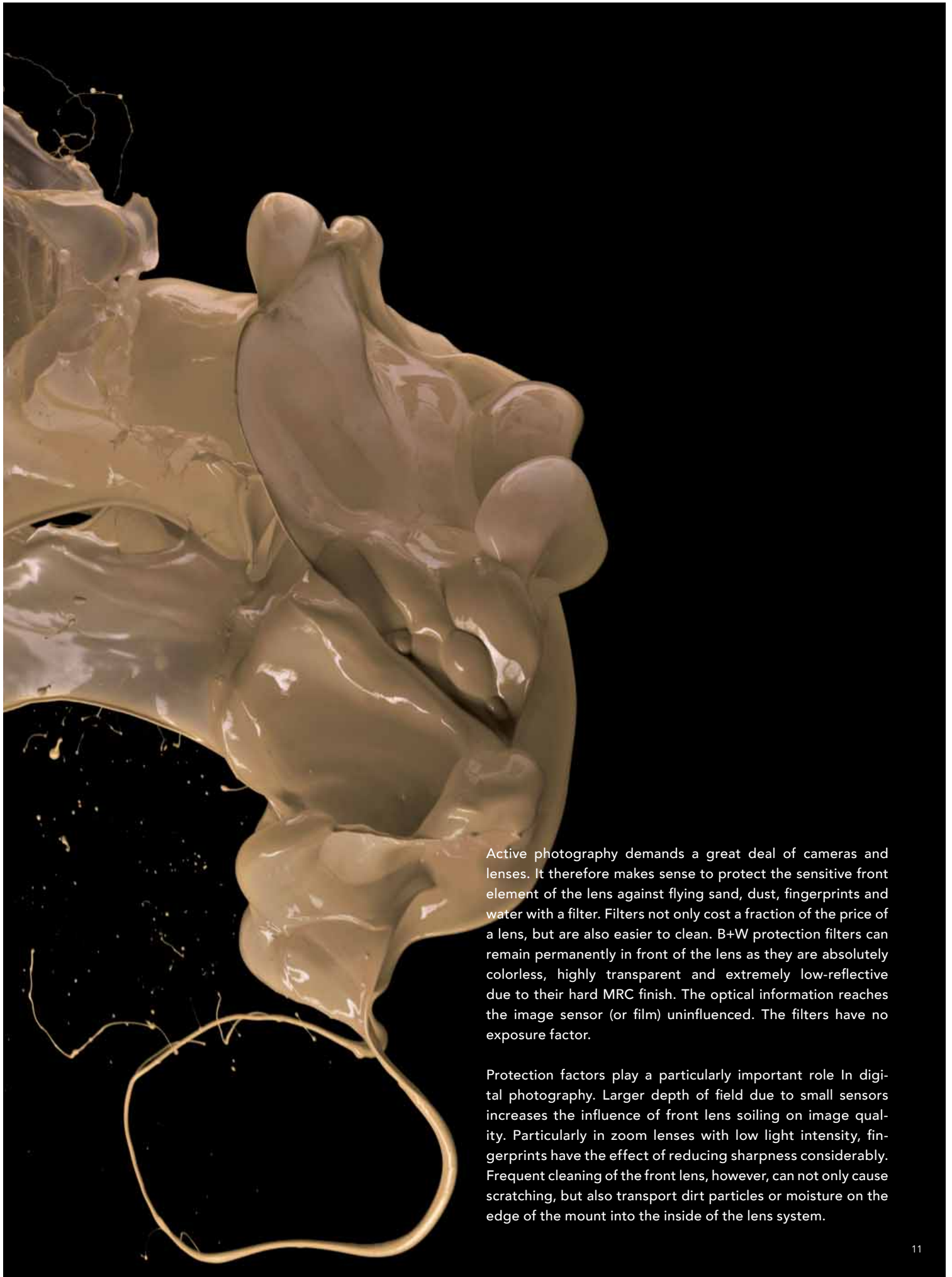
Available in EW Ø lens: 62, 67, 72, 77, 82, 86, 95, 105, 110, 112 and 122.

The guardian angels for
lens and image,
the bodyguards against

dirt :

the protective filters
from B+W Filter.





Active photography demands a great deal of cameras and lenses. It therefore makes sense to protect the sensitive front element of the lens against flying sand, dust, fingerprints and water with a filter. Filters not only cost a fraction of the price of a lens, but are also easier to clean. B+W protection filters can remain permanently in front of the lens as they are absolutely colorless, highly transparent and extremely low-reflective due to their hard MRC finish. The optical information reaches the image sensor (or film) uninfluenced. The filters have no exposure factor.

Protection factors play a particularly important role in digital photography. Larger depth of field due to small sensors increases the influence of front lens soiling on image quality. Particularly in zoom lenses with low light intensity, fingerprints have the effect of reducing sharpness considerably. Frequent cleaning of the front lens, however, can not only cause scratching, but also transport dirt particles or moisture on the edge of the mount into the inside of the lens system.

B+W Protection Filter Clear

This filter fulfils the desire of many photographers for pure lens protection without a filter effect. Its only function is to keep dirt, sand or splashes away from the front lens. The extremely clear special glass with high transmission is MRC or MRC nano-finished. The hydrophobic coating reduces the adhesion of particles and water drops. The advantages are easy cleaning and maximum reflection reduction. Also available for super-wide-angle lenses.

PREMIUM

PROFESSIONAL

B+W Protection Filter UV

The classic among the protection filters blocks the unwanted UV component contained in daylight. The invisible UV light occurs more in pure sea air and in the mountains, and can lead to blur and blue cast. The colorless UV filters are suitable for both analog and digital cameras and ensure more brilliant pictures. They can remain permanently on the lens to protect it from dirt and damage. A high-grade MRC or MRC nano finish provides optimum reflection reduction.

PREMIUM

PROFESSIONAL

Tip: Multi Resistant Coating with pearl effect

To guarantee perfect image quality, filters must be kept clean. This is supported by the hard MRC finish with its dirt and water-repellent coatings.

This is the best way to clean filters: Never rub off dry, loose dirt particles, but remove them first with compressed air (if possible without touching) or a soft lens brush. Breath on the particle-free filter surface and clean it gently with a soft B+W Photo Clear microfiber cleaning cloth. For difficult stains, B+W Lens Cleaner II spray is helpful. Little effort for constantly perfect image quality.

Do not use paper tissues for cleaning as their fibers cling to the filter due to being electrostatically charged.



F-Pro 007 Clear



F-Pro UV



XS-Pro 007 Clear



XS-Pro UV

All photographic

applications

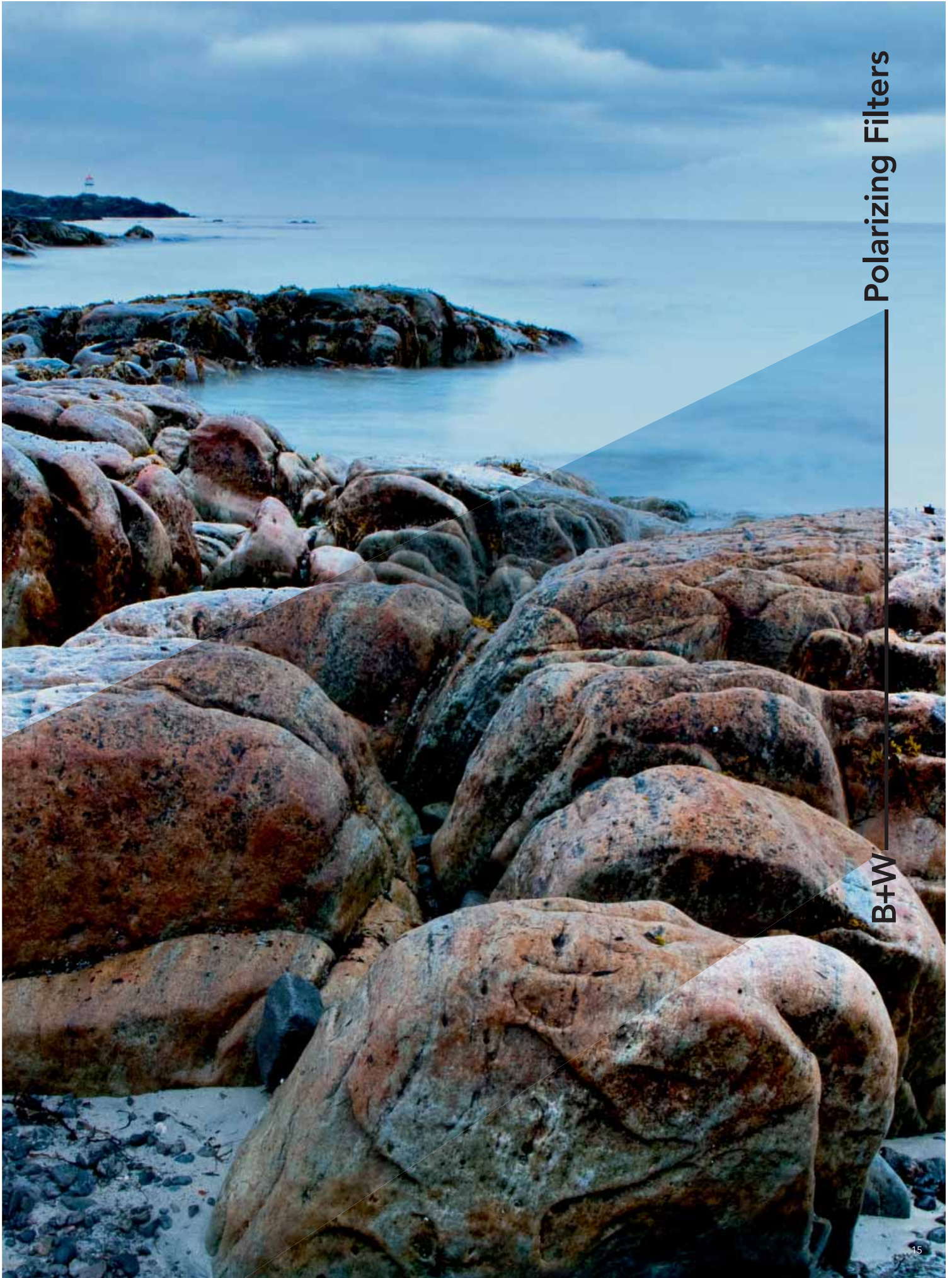
for B+W polarizing filters, gray filters, close-up lenses, effect filters and special filters.

Not forgetting the B+W filter accessories.

But see for yourself.

Polarizing Filters – reflection reduction par *excellence* .

Radiant white clouds against a deep blue sky or saturated fall colors are no coincidence. Polarizing filters (pol filters for short) block the bluish gray veil from the diffusely polarized light of the sky. They augment the purity of true colors and increase color saturation. Polarizing filters are amongst the most important filters in (digital) photography. They can be rotated in the mount, allowing the visible regulation of the elimination effect in the viewfinder or on the display. The filter factor is two to three f-stops. The maximum effect is achieved at a shooting angle of 90° to the sun. For an even effect in the picture, 35 mm (or 28 mm in 35 mm film format) should be the minimum. The second beneficial effect of pol filters is the reduction of reflections on non-metallic surfaces (water, shop windows, lacquer). Objects behind these surfaces, including writing behind reflecting lacquer, are made visible – a fascinating way to enhance images without using photo editing. Circular pol filters are recommended for digital cameras.



Polarizing Filters

B+W

B+W

Polarizing Filters



B+W "Käsemann" Polarizing Filter

For this high-end polarizing filter the foil pieces are selected individually for maximum color neutrality. Following cementing between high-grade optical glass, additional grinding and polishing takes place. This guarantees outstanding sharpness even with very bright, apochromatic lenses. The latest cementing technique ensures lasting stability even in damp climates. Available in the Professional Line as linear and circular polarizing filters, and some circular filters also come with MRC. Available in the Premium Line as circular polarizing filters with MRC nano finish.

PREMIUM

PROFESSIONAL

B+W Circular Polarizing Filter

The standard circular polarizing filter is equally suitable for both analog and digital cameras. Linear polarization can falsify exposure or AF metering if beams are split inside the camera (by mirrors or prisms). Circular polarization prevents this, while otherwise retaining the same effect. The B+W Circular Polarizing Filter is highly effective and is available with a single coating or with a high-grade MRC finish.

PROFESSIONAL



XS-Pro Käsemann-type circular polarizing filter



F-Pro circular polarizing filter



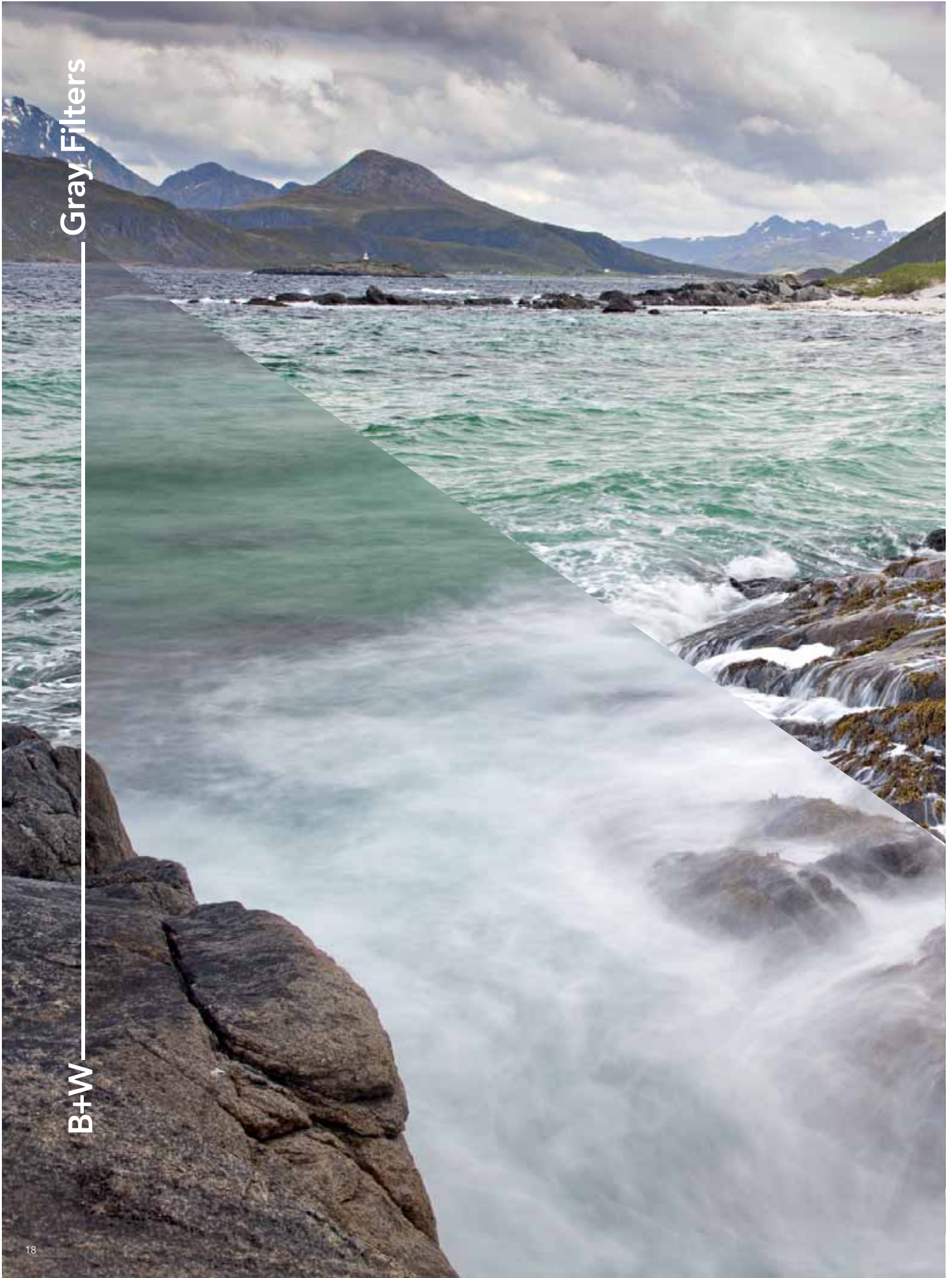
F-Pro Käsemann-type linear polarizing filter



F-Pro polarizing filter

Gray Filters

B+W



Gray Filters

101, 102, 103, 106 and 110

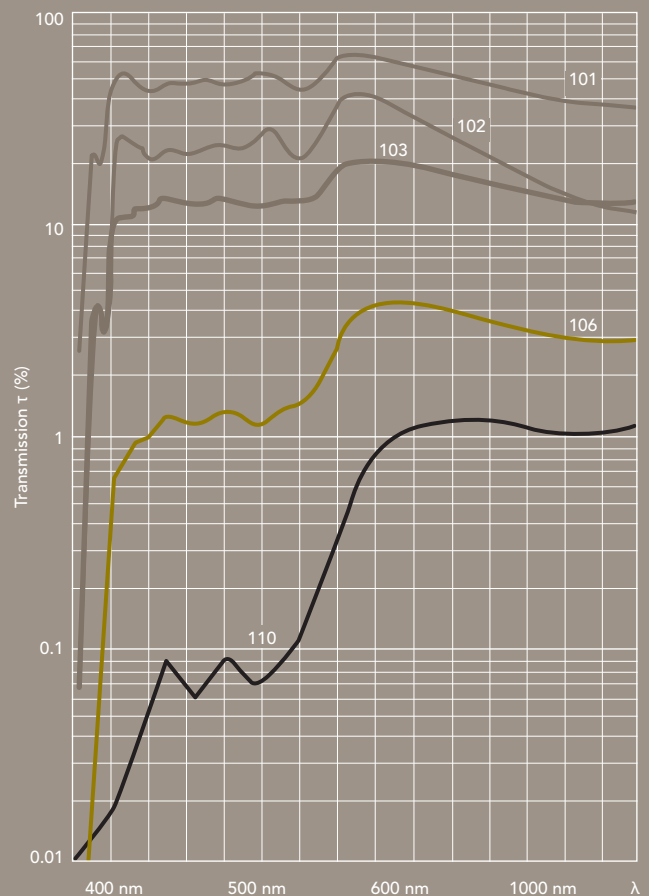
Gray filters – creative using less light

Gray filters or neutral density (ND) filters are used if too much light restricts creative possibilities. They reduce the light in accordance with their density. They therefore allow longer exposure times or more widely opened apertures. Applications are highly varied and in some cases experimental. For very bright motifs in the snow or on the beach the aperture would also have to be closed, despite minimum exposure time. This would mean losing the option of short depth of field, e.g. for portraits. Gray filters can produce wipe effects in movements if the exposure time can be extended with the required aperture. A waterfall then no longer appears to be frozen, but as a flowing motion. Gray filters create ingenious effects in architecture or urban photography. With long exposure times of several hours, people walking through the shot are blurred or not reproduced at all. For physical reasons, very dense filters possess a warm tone which can be compensated in image processing.

NEW: All gray filters are available with single coating or high-quality B+W MRC finish.

N.B.: Gray filters must not be used for direct visual observation of the sun (risk of blindness). They allow UV and IR rays which damage the eyes to pass through.

Special sun filters for direct observation of the sun are available from astronomy suppliers.



Gray Filters 101, 102, 103, 106 and 110



B+W Gray Filters 101 and 102

The gray filter series begins with low light attenuation. Type 101 reduces the light by exactly one f-stop (filter factor 2x), type 102 by two f-stops (filter factor 4x).

The moderate extension of the exposure values is recommended for indoors or outdoor shots with little light. At lower shutter speeds, creative soft focus effects, wipe effects and flowing effects for waterfalls can be achieved. Opening the aperture allows selective focus instead of deep focus – a desired effect when filming videos with DSLRs.

PROFESSIONAL



B+W Gray Filter 103

This already quite strong gray filter reduces the light by up to three f-stops, equivalent to a filter factor of 8x. It offers more options than weaker gray filters. This is already sufficient for successful time-exposure effects, and it can also be regarded as a universal gray filter in digital photography. White balance with the filter ensures optimum color neutrality. Tip: Remember to use a tripod for longer exposure times!

PROFESSIONAL



B+W Gray Filter 106

With its light reduction by six f-stops (filter factor 64x) this filter allows even more extreme experiments. This includes time-exposure effects such as light trails, flowing effects for moving water or walking people who become indistinct in soft focus. A physically induced higher red transmission produces a slightly warm tone. If necessary, this can be eliminated by white balance or an image processing program.

PROFESSIONAL

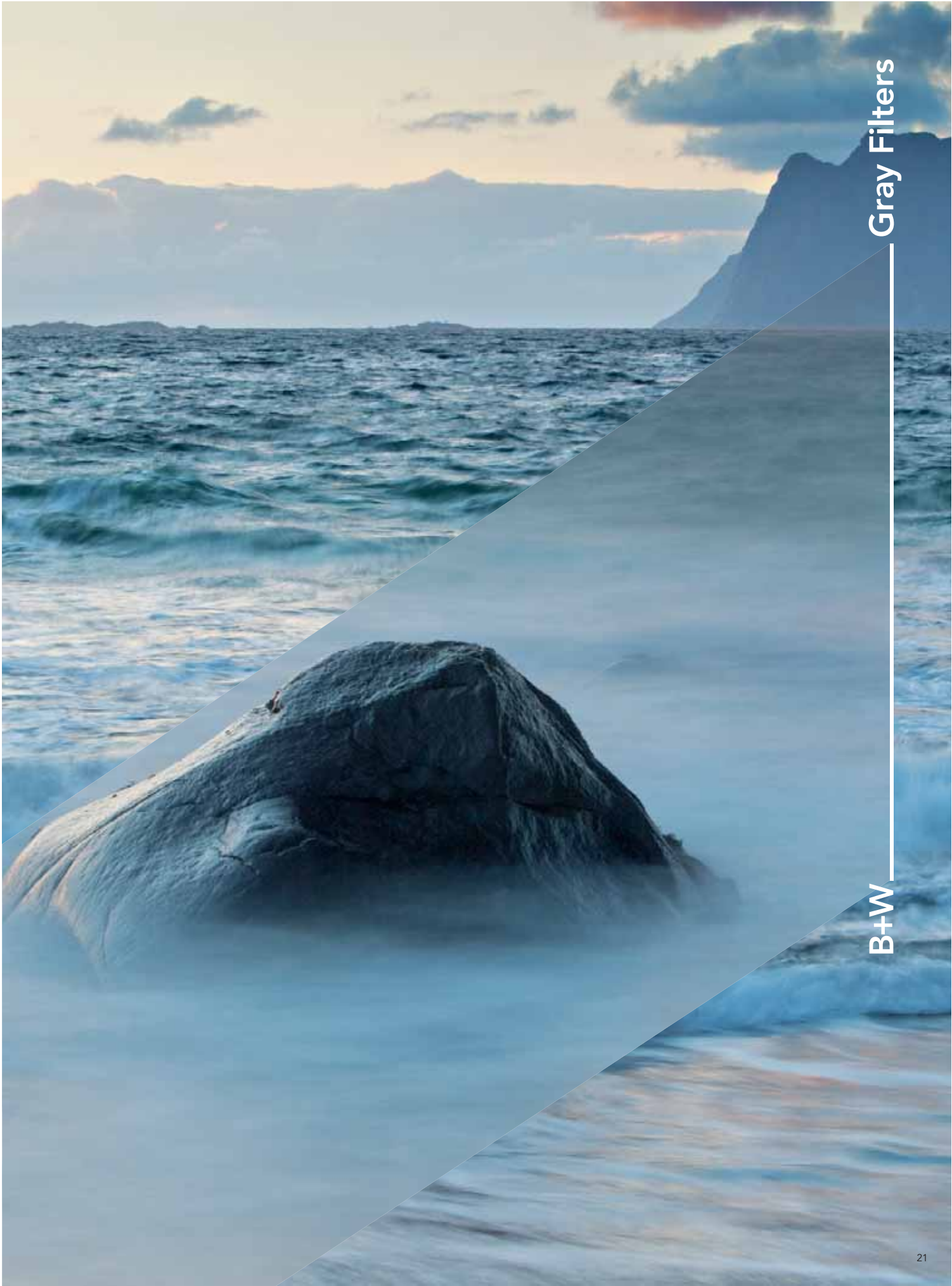


B+W Gray Filter 110

With exceptional light reduction by a full ten f-stops (filter factor 1000x) the 110 continues what begins with the 106: experimental photography with very slow shutter speeds. Continuous light trails, walking people on roads and squares become indistinct or even “invisible.” The flowing effect for moving water becomes even more extreme.

For physical reasons, the filter produces a slightly warm tone which can be eliminated by white balance or an image processing program.

PROFESSIONAL



Gray Filters

B+W

B+W

Special Filters



Close-up lenses reduce the minimum focus, produced clear details

Close-Up Lenses – small world in XXL.



Close-up lenses – reading glasses for your lenses

Would you like to explore fantastic worlds in miniature? Close-up lenses open up new motifs in an inexpensive way. Like reading glasses, close-up lenses move the focus range into the close-up zone. The effect increases with the diopter number and the focal length of the lens. For shorter focal lengths in digital photography stronger close-up lenses are therefore recommended. The image scale describes the effect. A scale of 1:3 renders an object at a third of its original size on the film/sensor. Close-up and macro lenses are simple aids which are suitable in particular for three-dimensional objects (flowers) and pictorial photography, less for technical reproduction purposes. Sufficient stopping down increases the sharpness and the depth of field.

Tip: Use a tripod for longer exposure times.

B+W Close-Up Lens NL 4

With +4 diopters this close-up lens is pretty powerful. With a focal length of 50 mm it attains an image scale of approx. 1:3. With 100 mm focal length this even advances to 1:1.9. To increase brilliance and sharpness, stopping down by about two f-stops is recommended. With the B+W Close-Up Lens NL 4, calyxes (flower heads) already become too large for the format.

PROFESSIONAL

B+W Macro Lens

With extremely high +10 diopter power this close-up lens goes beyond the normal scope. Its high refraction is ideal for the short focal length of digital photography. Even at a focal length of just 50 mm you enter the macro range, with an image scale of approx. 1:2. To increase (depth of) focus, stopping down by three f-stops is recommended. If graduated sharpness is part of the image concept, open apertures can also be used.

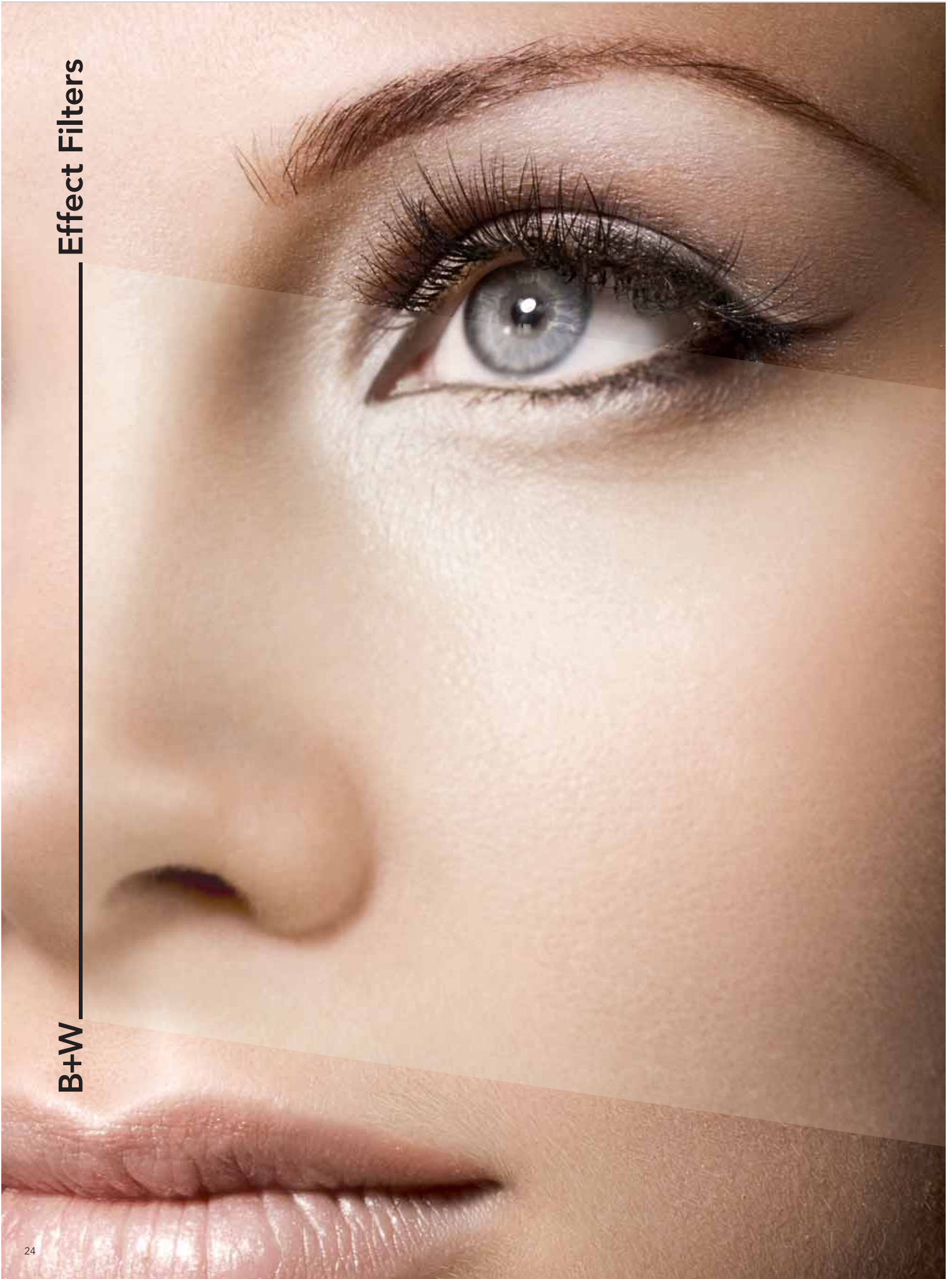
PROFESSIONAL

Close-up lenses +1, +2, +3, +4
and +5

Macro lenses +10 in special mount
Ø 49, 52, 55 and 58

Effect Filters

B+W



Soft Focus Attachment



Soft-Pro – precise beauty softener

The term “soft focus attachment” does not do justice to this soft filter. The filter delivers sharp pictures which are softly overlaid with unsharpness. Details such as eyelashes do not taper into unsharpness, while skin blemishes are gently covered up. Small mini-lenses are distributed randomly on a precisely plane-parallel glass disc. They scatter the light and overlay the sharp core image with hazy, diffuse halos. This opens up deep shadows, while highlights themselves are hardly blurred, but instead form a shimmering aura in the darker surroundings. Professionals, even in Hollywood films, use these stable glass filters when aiming for perfect beauty shots. The effect cannot be achieved with image-processing software (e.g. Gaussian blur).

PROFESSIONAL

B+W Soft Focus Attachment Soft-Pro

A special soft focus attachment with irregularly distributed micro-lenses on precisely plane-parallel clear glass. The sharp core image is overlaid with a soft unsharpness. Ideal for dreamlike feminine portraits, softly shimmering, backlit blond hair, soft dream landscapes, and all without much loss of sharpness. The B+W Soft Pro largely retains the overall contrast, working almost independently of focal length and aperture, thereby allowing control of the depth of field. It poses no difficulties for autofocus systems.

PROFESSIONAL

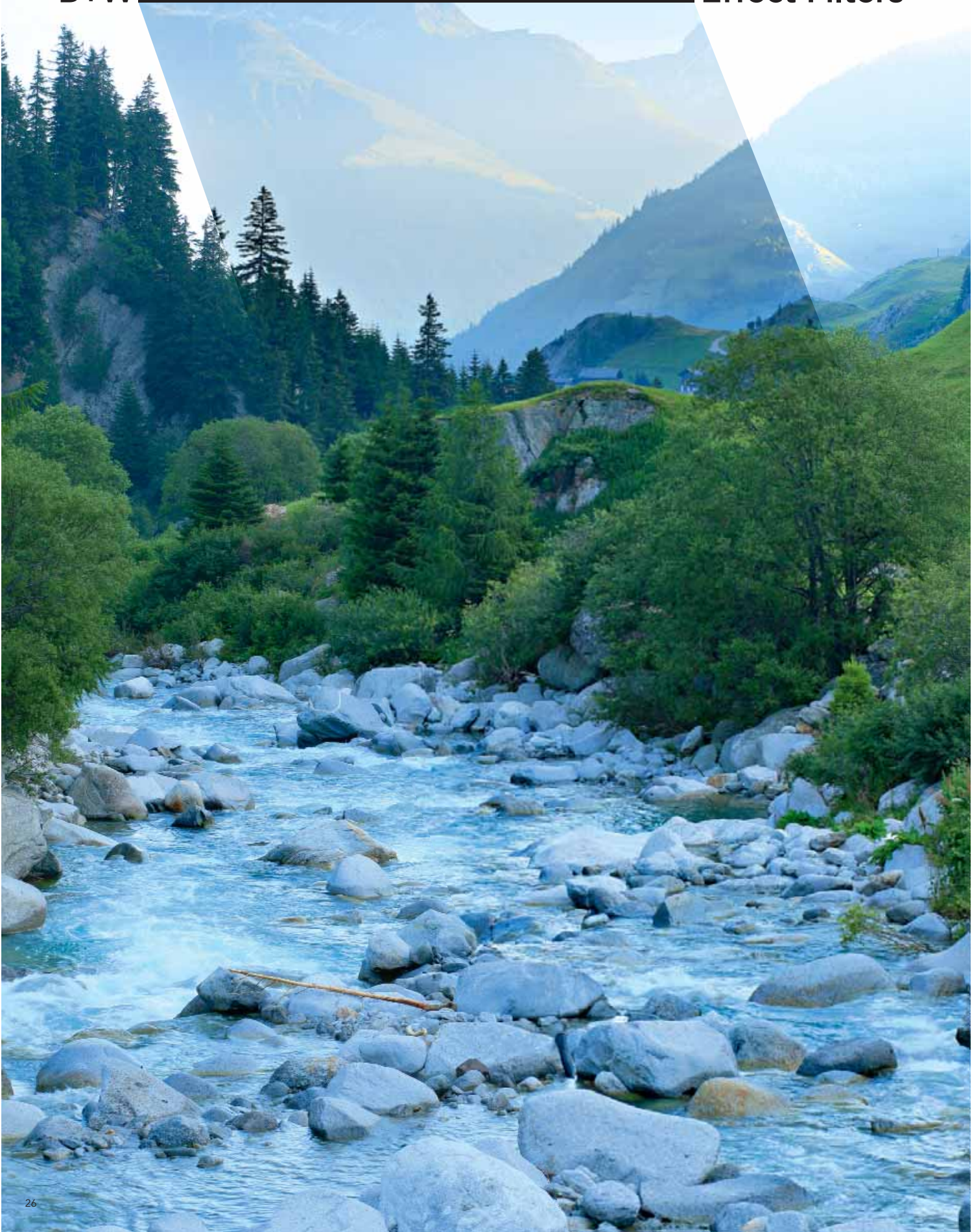
Cross Screen, 4x, 6x and 8x

B+W effect attachments make unusual photos possible. Suitable motifs become even more attractive. This results in pictures with a look that stands out positively when it is consciously employed.

Cross screen filters consist of high-quality optical glass into the surface of which fine grating structures are integrated. Depending on the form of grating, light sources or bright reflections shine in a multi-star pattern that surrounds them. It is important that the light sources are bright and dot-shaped. Then the subtly colored star effect forms in very high definition.

PROFESSIONAL







Graduated filters – reducing extreme contrast

Graduated filters are colorless and compensate excessive contrasts between the sky and the landscape. Clouds gain definition, sky blue acquires depth. The filters can be rotated in the mount in order to adapt the graduation to the horizon. If exposure metering is done through the filter, a minus correction of approx. 0.5 is advisable.

B+W Graduated Filter 502 Dark Gray

Extremely well defined clouds and a full-bodied instead of milky tone in the sky – these are the effects produced by this already stronger graduated filter. It attenuates the light in the darkest zone by two f-stops (transparency 25 %). Very high-contrast landscape motifs without loss of definition become possible. The graduation zone allows some degree of tolerance, but for a natural transition the horizon line should not be positioned too far from the center of the image.

PROFESSIONAL

Redhancer – luminance for warm tones

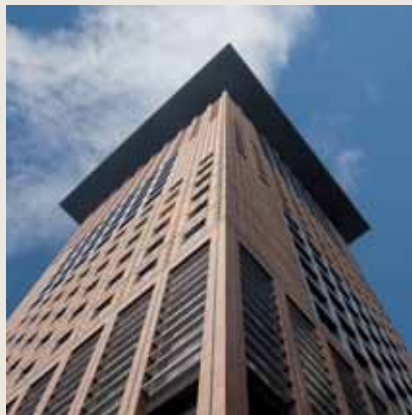
This special filter intensifies the reproduction of orange, red and brownish color components without completely blocking bluish components. The B+W Redhancer 491 does not achieve its special transmission through coloring, but through the chemical composition of the glass. Besides landscape and nature motifs, the filter effect is also suitable for advertising photography. The shot appears particularly natural if reddish areas predominate and there is no pure white in the image.



B+W Redhancer 491

This special filter amplifies the reproduction of reddish tones from orange and red to reddish brown. Autumnal motifs, flowers or fruit with reddish colors, as well as red-painted objects (cars, boats) or reddish rocks, all gain luminance. The Redhancer 491 is even more effective in combination with a polarizing filter which removes the bluish-gray haze. Fabulous autumnal landscapes full of luminance (Indian Summer) can be captured. Filter sequence: pol filter at the front, with the Redhancer behind.

PROFESSIONAL

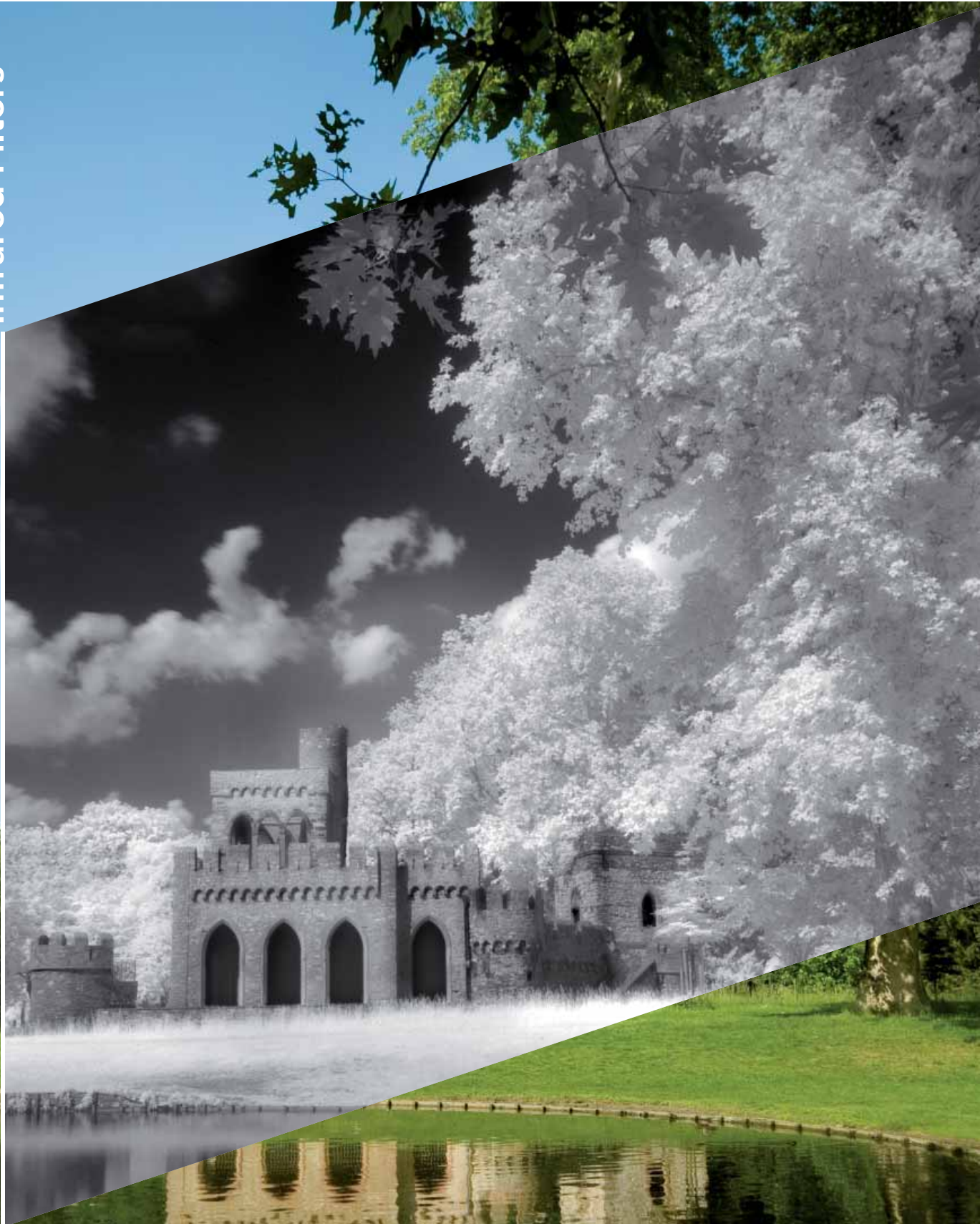


Without Redhancer: Pale red-orange tones



With Redhancer: Fresh, vibrant red-orange

Infrared Filters



B+W

Special Filters



Infrared digital – special filters for the invisible

These two special filters perform contrasting tasks. The UV/IR Blocking Filter 486 blocks unwanted ultraviolet and infrared light components that can produce ghost images and sharpness-reducing interference. The images gain sharpness, detail and fine color gradations. Digital cameras have similar filters in front of the image sensors; nevertheless, considerable residual transmission is detectable in the infrared range. A gap that is closed by the UV/IR Blocking Filter 486.

It is precisely this gap that the Infrared Filters 092 and 093 make use of. Digital cameras with sufficient IR residual sensitivity take highly typical infrared picture when the visible light is blocked. The black-red Infrared Filter 093 is ideal for this task. The image section is selected and infrared focusing performed before attaching the filter..

B+W Infrared Filter 093

This filter blocks visible light (up to 800 mm) almost completely. It is dark red, almost black. With analog IR film or IR-sensitive digital cameras it delivers a fantastic wood effect (white leaves) and a typically dark sky. The exposure values vary according to the digital camera model being used and are best determined by experimenting. They are usually in the range of a few seconds. Focusing is performed first without a filter using IR focus correction.

PROFESSIONAL

B+W Digital UV/IR Blocking Filter 486

This filter has a steep cut-off effect for unwanted ultraviolet and infrared light. In digital cameras and camcorders without full filtering in front of the image sensor it prevents color casts and unsharpness. The brilliance and sharpness of the images are increased. This takes place by interference between vacuum-deposited layers and not by absorption via colored glass. This principle is ideal for angles of view up to 60° or smaller. The filter has no exposure factor.

PROFESSIONAL

Tip: Digital infrared photography

Whether or not a digital camera is IR-sensitive can be determined with an IR remote control. Instructions can be found on the Internet. The IR focus point is somewhat further away than that for visible light. With the filter attached, white balance is performed automatically or (preferably) manually. The IR photos are optimized in the image-processing program: Increase contrast automatically or in the histogram, convert color images to black and white or experiment with individual color channels, leaving the red channel on maximum. No matter whether digital or analog, infrared photography is experimental by nature.

Black and White Filters

021, 022, 023, 039, 040, 041, 090, 091

Consciously composed black and white photography enjoys undiminished popularity. However, the conversion of the colors into gray-scale values does not correspond to the brightness perception of the human eye, in neither film nor digital photographs. Filters are therefore indispensable for black and white photography.

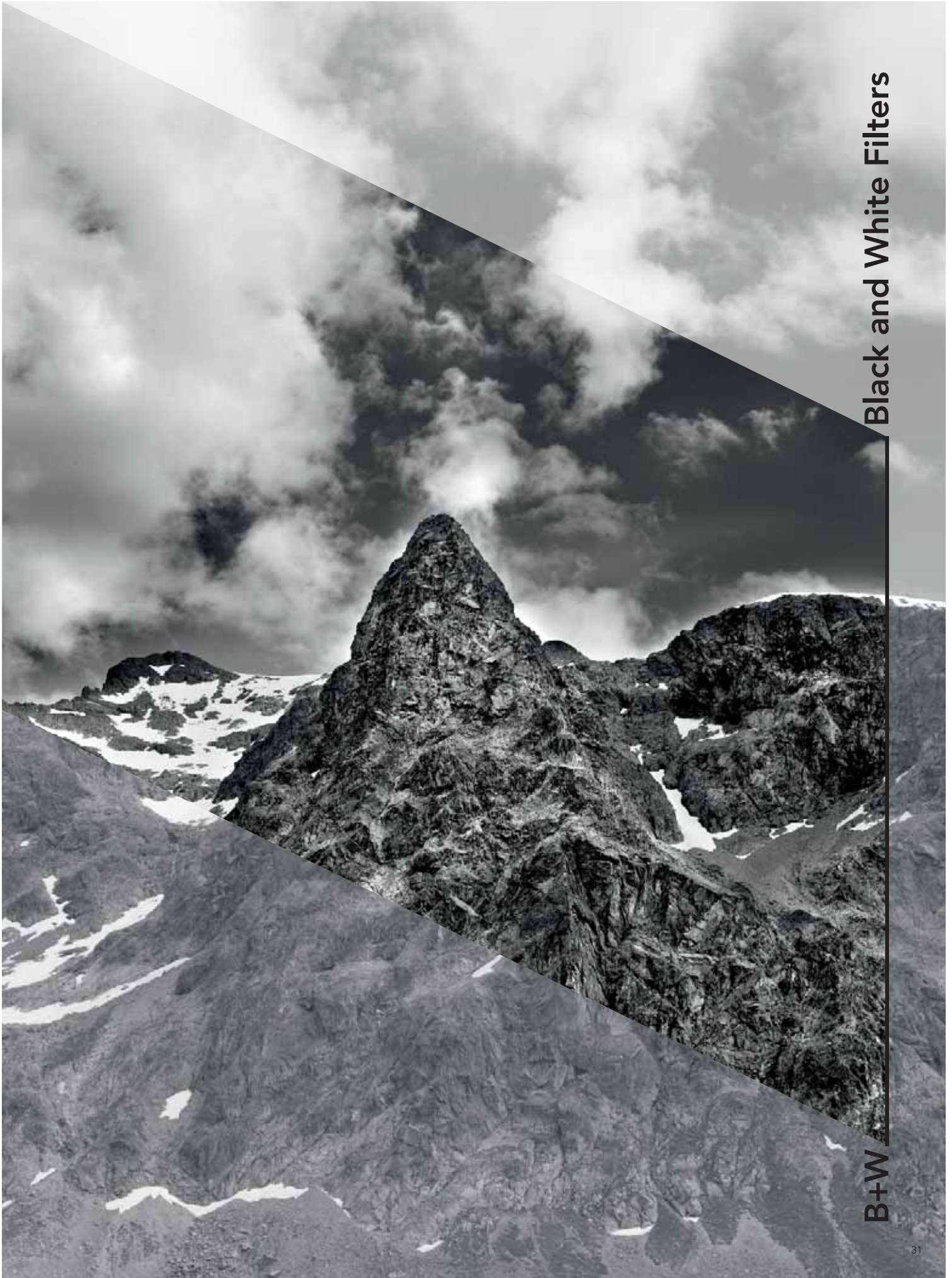
A simple rule explains the mode of action: The filter's color is made lighter, the complementary color is made darker. An apple tree serves as a good example: When using a red filter, a red apple appears lighter and the green leaves are reproduced darker. In contrast, a green filter lightens the leaf green and darkens the red of the apple.

Yellow filters very visibly increase the contrasts (by darkening the sky) in landscape photos. The pictures gain more brilliance, with plant green receiving more differentiated reproduction. A medium yellow filter is regarded as the standard filter in black and white photography. An orange filter increases this effect, making a diffuse sky of clouds appear much more dramatic. The skin blemishes of a model (red patches) are also concealed.

The group of the red filters increases this effect to the point of estrangement. A summer landscape photo with a cloudy sky is transformed into a dramatic storm mood (wood effect), and a dune landscape becomes a moonscape with an almost black sky.

TIP: On digital cameras with a black and white mode you can achieve these effects while taking the shot and view them on the camera monitor. Subsequent conversion using image-processing programs is unnecessary.

Black and white filters also improve the resolution and sharpness of the image. With these filters the lens is used only in a narrow-band or even monochromatic color spectrum. All the chromatic aberrations of a lens, such as longitudinal and lateral chromatic aberrations, are significantly reduced or almost completely eliminated, depending on the filter. Light that was previously filtered is no longer "available" for aberrations.



Black and White Filters

B+W

Accessories



B+W Adapter Rings

If photo equipment is to include lenses with different filter thread diameters, the B+W adapter rings can adapt filters and supplementary lenses to different lens diameters. This is less expensive than buying several lenses with the same filter type – money that would be better invested in a larger selection of filters. When buying filters, first check the largest diameter required. When there are three different diameters to cater for at the same time, adapter rings can also be combined if necessary. Increased thickness due to using several mounts can result in vignetting. B+W offers a wide range of adapter rings.

B+W Photo Clear Microfiber Cleansing Cloth¹



There is no better cleansing and care cloth for sensitive optical equipment: The B+W Photo Clear is made from a high-tech microfiber which is free of chemicals and lint, and cleans gently but thoroughly. It can be washed in an environmentally safe manner, and used again and again without losing any of its properties – an accessory of frequently underestimated importance for imaging performance. Available in 17 × 17 cm and 36 × 28 cm sizes, each with a protective plastic envelope.



B+W Lens Cleaner II Cleansing Spray

Persistent marks on highly sensitive optical surfaces cannot be removed with a cloth alone. The B+W Lens Cleaner II has been developed for this purpose. It is a cleansing solution with highly effective cleansing agents which leave no unwanted residue on the glass. The propellant-free pump spray is simple to use, non-flammable and bio-degradable. Indispensable for photo trekking or outdoor action photography.

NEW: Lens Cleaner II is also suitable for LCD/TFT screens.



B+W Collapsible Lens Hoods¹

Collapsible lens hoods are made of high-grade rubber. Their advantage compared to fixed lens hoods made of plastic or metal is that, in their collapsed state, they protrude only a short distance. This means that the lens hood can remain attached to the lens and, together with the camera, will also fit into a tight photo bag.

Lens hoods are usually regarded simply as a kind of sun visor. In fact, stray light occurs not only by sunlight obliquely striking the lens, but also due to bright ground surfaces (snow, beach), diffuse light or (in object photography) bright surroundings such as a light table. Blocking stray light can considerably improve the image quality of even the most expensively coated lenses.

- The B+W Lens Hood 920 is designed for wide angle (zoom) lenses with angles of view up to 70°. In the limit range of around 70° it should only be used without a filter in order to avoid vignetting. In its collapsed state the hood increases the lens length by less than one centimeter.
- The B+W Lens Hood 900 is tailored to standard lenses and short telephoto focal lengths. Its inner ribbing enhances the light-absorbing effect of the matte black surface. In its collapsed state, the rubber hood increases the length of a lens by only one centimeter (up to 77 mm filter thread).



B+W Metal Lens Hoods

B+W metal lens hoods convey a reassuring, stable impression by their very appearance. The black anodized aluminum reliably blocks stray light, and the precision-engineered tubes have black inner ribs for even greater absorption of unwanted light.

Here too, three types are available for numerous filter sizes:

- B+W Metal Lens Hood 970, suitable for wide angle (zoom) lenses up to 70° diagonal angle of view
- B+W Metal Lens Hood 950 for standard lenses and short telephoto lenses
- B+W Metal Lens Hood 960 with a narrower and longer tube for telephoto lenses



NEW

B+W Snap Cap Pro 311²

Hard plastic cap with two spring-loaded plastic claws opposite each other that engage the front thread of the lens (or filter). Simple removal by pressing the two buttons together means fast and uncomplicated one-hand operation. Available for thread sizes 52, 55, 58, 62, 72 and 77.



B+W Slip-on Front Lens Cap 300

Protective cap made of flexible plastic material that slips over the outer front rim of the lens or filter. It remains in place by means of friction of the slightly elastic, slip-proof plastic material. Also very simple to handle. Available for lens or filter front rim diameters of 27, 30, 32, 37, 42, 51, 54, 57, 60 and 70.



B+W Slim Front Lens Cap 305

This cap corresponds in all its features to the 300 except for thickness. The Slim 305 is made of flexible plastic and tailored specifically to the flat Slim filter mounts. This flat lens cap is advantageous when the front rim of the lens is slightly larger than the Slim filter, so that a normal lens cap could not be slipped on completely. Available for the following Slim filter mounts 49, 52, 55, 58, 60, 62, 67, 72, 77 and 82, or for the corresponding outer diameters 52, 55, 58, 61, 62, 65, 70, 75, 80 and 85 mm.



B+W Rear Lens Caps 330 to 335²

Hard protective cover for the camera-side rear bayonet or thread of the lens. Available for lenses of Canon FD (330), Minolta MD (331), Nikon (332), Pentax K (334) and M-42 thread (335).



B+W Camera Body Covers 320 to 325²

Hard protective covers for the bayonet or thread lens mounts on camera bodies. Available for SLR cameras with the lens mounts Canon FD (320), Minolta MD (321), Nikon (322), Pentax K (324) and M-42 thread mounts (325). These camera body covers can also be used as front protective covers on tele-converters, provided that their optical systems are sufficiently recessed in their mounts.



Nylon Fabric Filter Pouches²

These filter pouches are made of padded, heavy-duty and water-repellent nylon fabric with practical Velcro fasteners and a white space for labeling.

They provide excellent protection for the individual filters. Available in three sizes:

- E 1 11.5 × 11.5 cm for filter sizes up to 77 Ø
- E 2 14.5 × 14.5 cm for filter sizes up to 105 Ø
- E 3 20.0 × 20.0 cm for filter sizes larger than 105 Ø



B+W Filter Pouch B4² and B6²

The folding, foam-padded pouch made of flexible plastic material can hold up to six filters. Snap fasteners and transparent inner compartments ensure quick, easy access and the secure positioning of the filters. When folded, the pouch also fits into the front compartment of a photo bag for fast, convenient removal. Filter pouch B4 is suitable for filters sizes up to 82 Ø (max. 4 filters) and filter pouch B6 up to 62 Ø (max. 6 filters).



B+W Individual Filter Case

B+W provides various cases for the safe, dust-proof storage of filters. The flat, handy filter cases made of hard but transparent plastic let you see right away which filter is stored inside.

A shock-absorbing foam insert prevents slipping and rattling. The sturdy individual cases are available in three sizes, with additionally available inserts reducing the dimensions for smaller filters:

- Size BH for filters and special effects attachments up to 52 Ø (with insert up to 48 Ø)
- Size D for filters up to 82 Ø (with insert up to 62 Ø)
- Size E for filters up to 105 Ø

¹ Made in Japan.

² Made in China.

You will find overviews of the product range and further information on the B+W filters on the Internet at: www.schneiderkreuznach.com/fotofilter

Publisher

Jos. Schneider Optische Werke GmbH
Business Unit B+W Filters
Ringstraße 132
D-55543 Bad Kreuznach
www.schneiderkreuznach.com

Concept and Design

Scheufele Hesse Eigler
Kommunikationsagentur GmbH
Cretzschmarstraße 10
D-60487 Frankfurt am Main
www.scheufele-online.de

Photography

Achim K. Rösch, cover, page 4, 6, 7,
25, 26, 31 and product shots
Gaby Reichert, page 15, 18, 21
Frank Widmann, page 16, 27, 28

Copy

IdeaTorial Redaktionsteam,
Heinz-Jürgen Kruppa
Immenbuschweg 5
D-27389 Vahlde
www.ideatorial.de

Translation

Ian McCaughtrie
D-22926 Ahrensburg

Jos. Schneider Optische Werke GmbH
Business Unit B+W Filters
Ringstraße 132
D-55543 Bad Kreuznach
Phone +49 671 601-122
Fax +49 671 601-302
filter@schneiderkreuznach.com
www.schneiderkreuznach.com